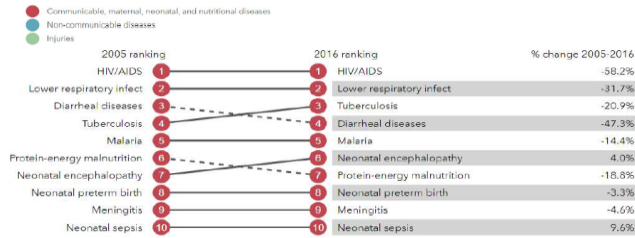




Charles R. Drew University of Medicine and Science
2018 Diplomats on Global Health Disparities Series:
Zambia

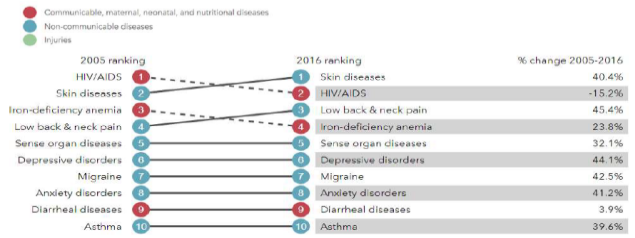


What causes the most death?



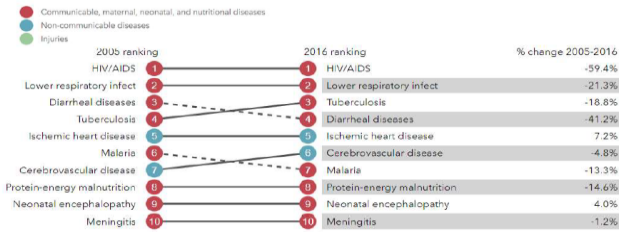
Top 10 causes of death in 2016 and percent change, 2005-2016, all ages, number

What causes the most disability?



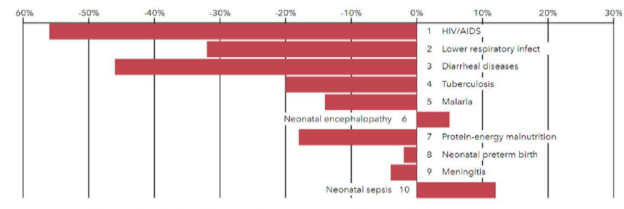
Top 10 causes of years lived with disability (YLDs) in 2016 and percent change, 2005-2016, all ages, number

What causes the most premature death?



Top 10 causes of years of life lost (YLLs) in 2016 and percent change, 2005-2016, all ages, number

What causes the most death and disability combined?



Top 10 causes of disability-adjusted life years (DALYs) in 2016 and percent change, 2005-2016, all ages, number

